

Training Programme Directors' Development Day



The picture can't be displayed.

Thank you!

Further changes to training were required to support 3rd wave:

- Deferral of Feb rotations
- Redeployment of trainees
- Supported return to training programmes
- Support for national data collections

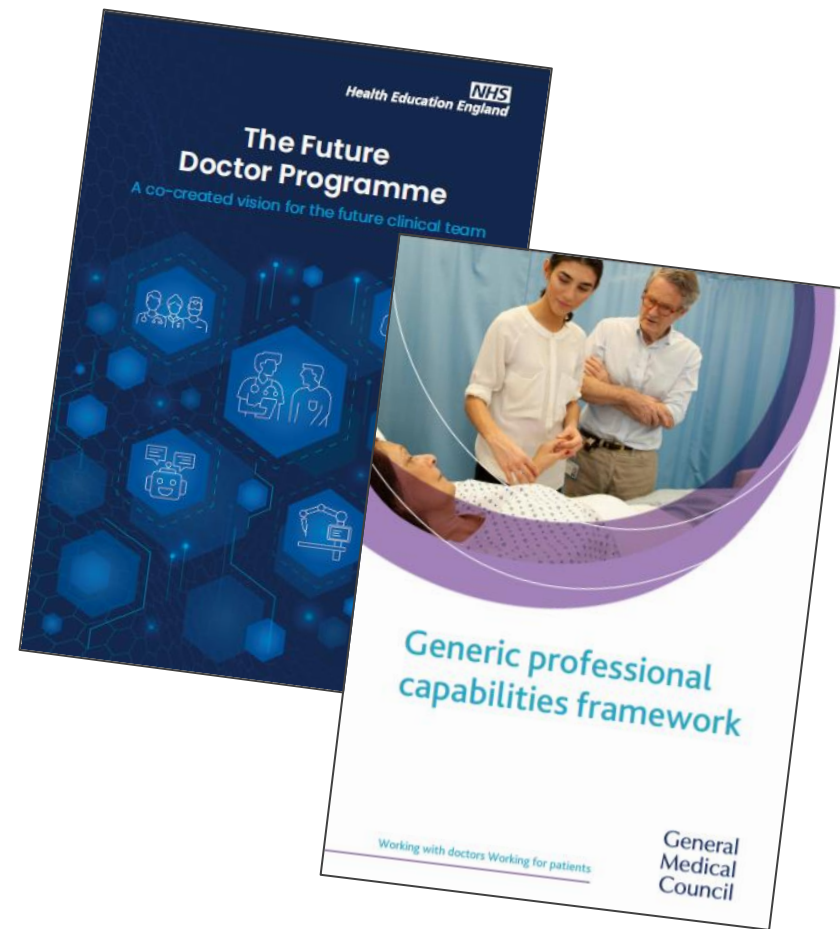


#EMERGENCY #COVID19

#328873

National Updates

- Curriculum updates
- Generalist Competencies
- [NHS Education Contract](#)



National programme updates

- Mental Health capacity
- Cancer Services capacity
- Additional foundation places 2023 to meet UG expansion
 - Stand alone F2s 2021/22
- GP 24/12 2021
- IMT3 and standalone posts for CMT trainees, 2021-23
- Anaesthetics Core 3 year programme



Local updates

- Planning recovery
- Individual trainee conversations
- Use of Trust posts to support training recovery
- Costs of training recovery
- Recruitment plans and future pipeline
- Future ways of working/Reform
- SMART use of study leave to support recovery

Recovery

Wider than just recovery, how do we learn and progress

- Recovery – Data collections to inform costs and DHSC, OOPP and LTFT cat 3, simulation, flexible portfolios
- Learn from Interim FY1 - **Student Assistantships and Moving the Point of Registration**
- Flexibility in programmes - **Individualised Assessment and Progression**
- Head of School workshop
- Trainee wellbeing initiatives, national and local

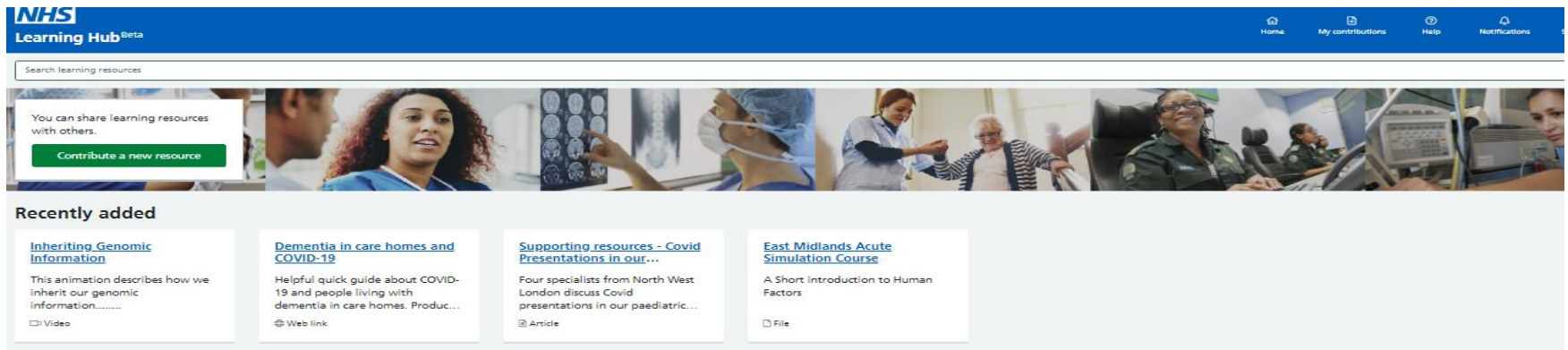
TEL support for training recovery

- National catalogue of TEL resources being developed
- Initial focus on identifying products, technologies or services to support training gaps



Learning Hub/eLfH

- Digital platform providing easy access to range of education and training resources inc e-learning, video, audio, documents, web links etc.
- <https://learninghub.nhs.uk/>
- <https://www.e-lfh.org.uk/programmes>

The screenshot shows the NHS Learning Hub Beta website. At the top is a blue header with the NHS logo and 'Learning Hub Beta' text. On the right of the header are navigation links: Home, My contributions, Help, and Notifications. Below the header is a search bar labeled 'Search learning resources'. A banner image shows various healthcare professionals. Below the banner is a 'Recently added' section with four resource cards:

- Inheriting Genomic Information**: This animation describes how we inherit our genomic information.....
 Video
- Dementia in care homes and COVID-19**: Helpful quick guide about COVID-19 and people living with dementia in care homes. Produc...
 Web link
- Supporting resources - Covid Presentations in our...**: Four specialists from North West London discuss Covid presentations in our paediatric...
 Article
- East Midlands Acute Simulation Course**: A Short introduction to Human Factors
 File

Available from e-Learning for Healthcare



Wellbeing & Flexibility

- [Extension of OOPP](#)
- [Extension of LTFT Cat 3](#)
- Extended induction for F1s – additional 5 days
- Self development time for FDs
- National wellbeing webpage



Supported Return to Training (SuppoRTT)

- Trainees OOP for 3 months or longer are eligible
- Individualised training package from menu of options
- Structured and systematic process
- [SuppoRTT Animation](#)

Contact us

- SuppoRTT Team: SRTT.lase@hee.nhs.uk
- SuppoRTT Champions:
<https://london.hee.nhs.uk/professional-development/supported-return-training/supportt-champions>

Wider range of support services available via:

[Professional Support Unit Resources](#)

London/KSS/National websites

- www.london.hee.nhs.uk
 - Calendar hosting details of regional training days
- Synapse decommissioned
- <https://kss.hee.nhs.uk/>
- National website project

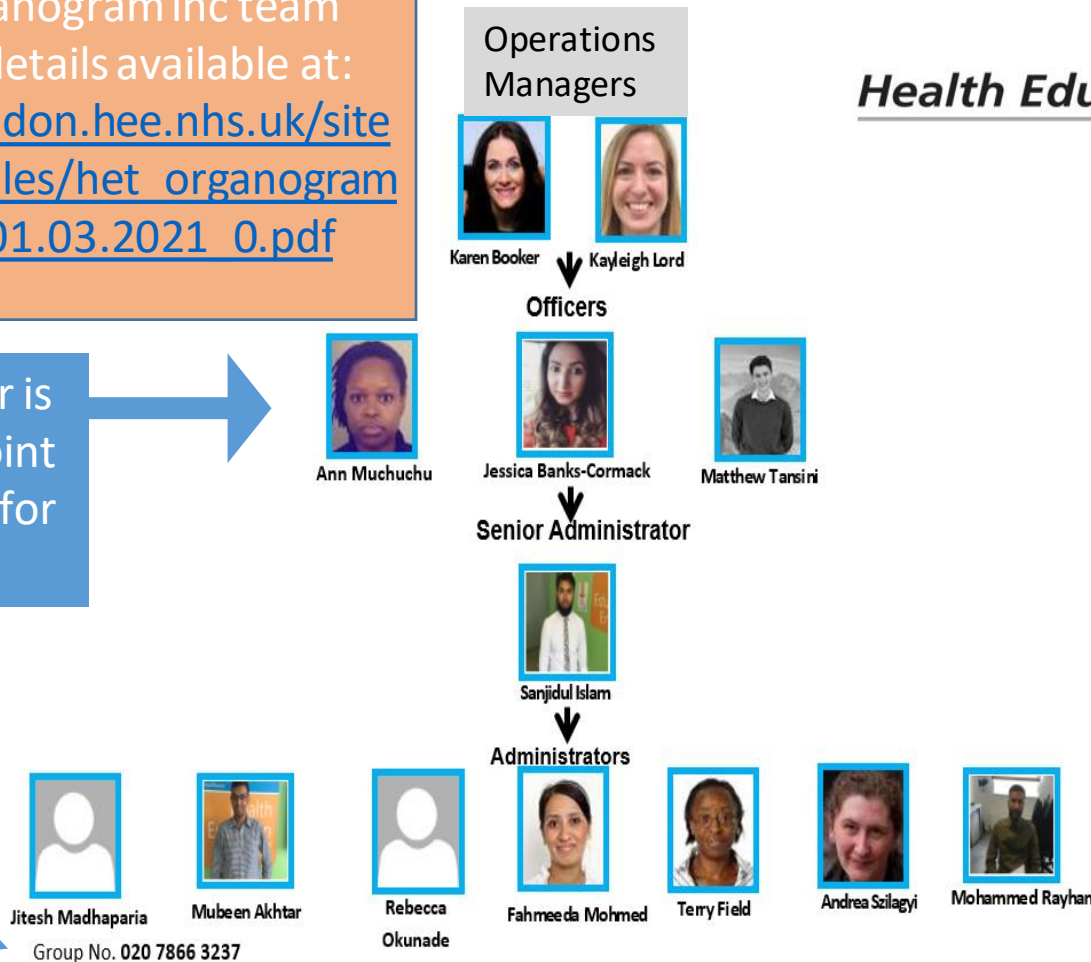


HET Teams – how they work

HET organogram inc team contact details available at:
https://london.hee.nhs.uk/sites/default/files/het_organogram_as_of_01.03.2021_0.pdf

HET Officer is primary point of contact for TPDs

Every team has a phone number



NHS
Health Education England

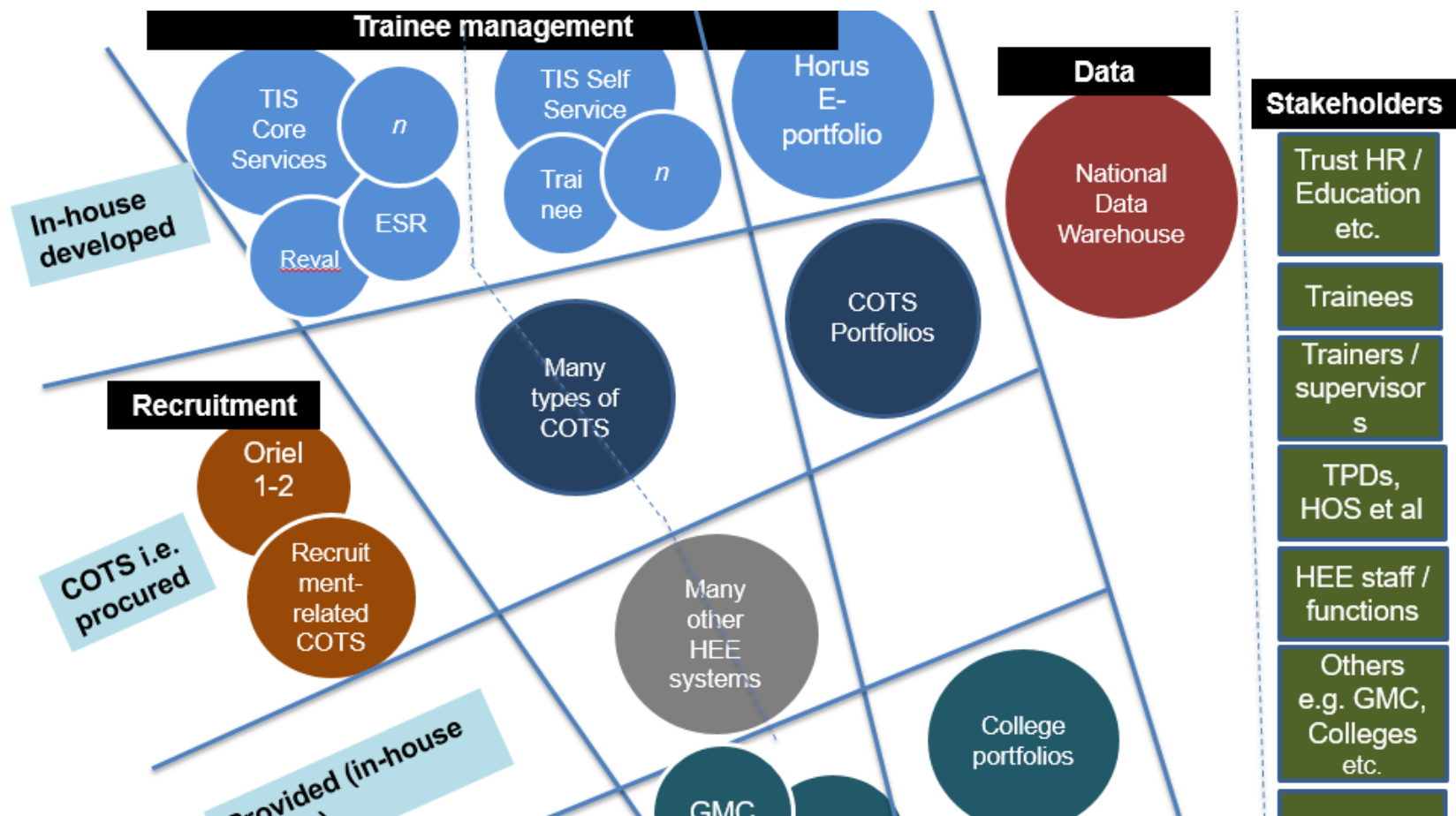
HET staff continue to work remotely but remain very accessible.

Access to Stewart House remains very limited.

Enquiries must now be submitted via our PGMDE Support Portal please visit:
<https://lasepgmdesupport.hee.nhs.uk/support/home>

Here you will be able to review our FAQs as they may contain the answer to your question. If not then you will be able to submit your query via the portal.

System links



HEE Trainee Information System

TIS

- Accessible by HEE and Trust MEM/HR departments
- Links to GMC database for revalidation recommendations
- Links to Electronic Staff Record – bi-directional interface now live
- National reporting tool being rolled out to trusts – self serve
- Trainee interface being piloted
- Placement Manager – minimum viable product available
- TPD access being rolled out

Development Areas

- TPD development sessions redesigned by HoS
- TPD Handbook to be piloted shortly – volunteers??
- Trainee Representative Networks – local & national
- Anything else...?



