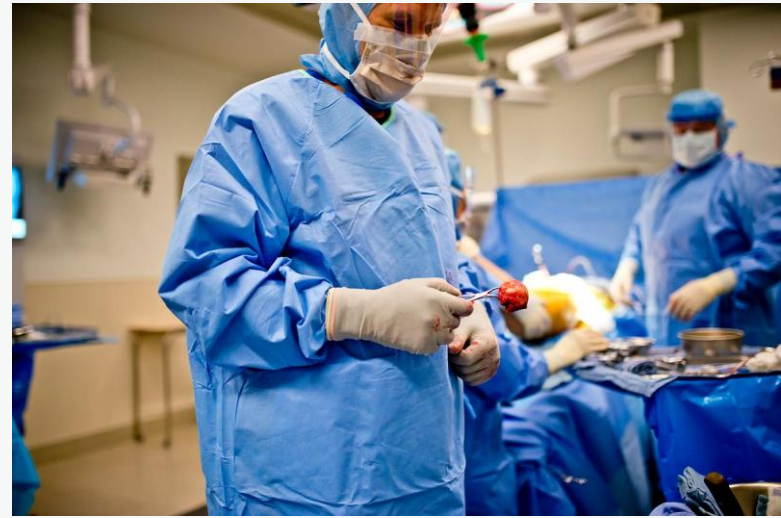


# LTFT 2025



London Foundation School

**NHS**



# Overview

- What is LTFT
- Implications of LTFT
- How to apply
- Changing LTFT fraction
- Questions and answers

# London Foundation School

Pan London from August 2023

5 groups: NW, NC, NE, SW, SE

All programmes are in London





# LTFT – the fundamentals

Designed to support Resident Doctors working lives and staff retention

All FDs can apply:

Health ( need OH advice) / Caring responsibilities/ Well-being/  
Unique opportunities/ Flexibility

As per GMC minimum that can be worked is 0.5 WTE



# LTFT – the fundamentals

Pay and annual leave will be adjusted by your employer pro-rata

Needs special consideration if you are on Tier 2 visa

Posts offered may differ from those offered via Oriel should you choose to work LTFT

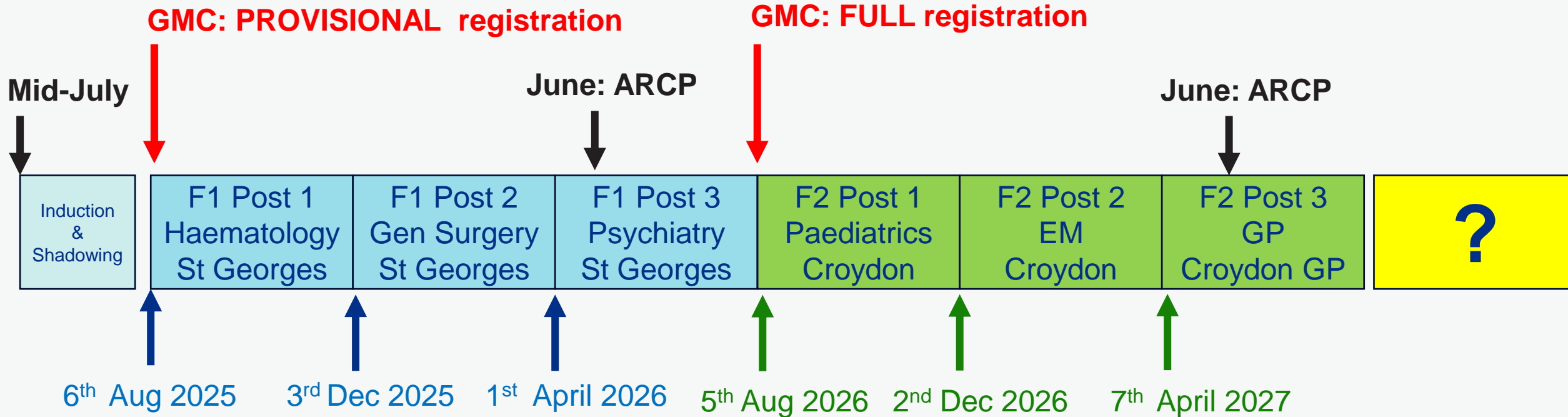
Slots shares will be facilitated wherever possible

# LTFT – timelines

FY training is time and competency based

Fraction of working	FY1 (months)	FY2 (months)
1.0	12	12
0.8	15	15
0.7	17	17
0.6	20	20
0.5	24	24

# Standard Programme Timeline





# Example LTFT 0.8 F1 Programme Timeline

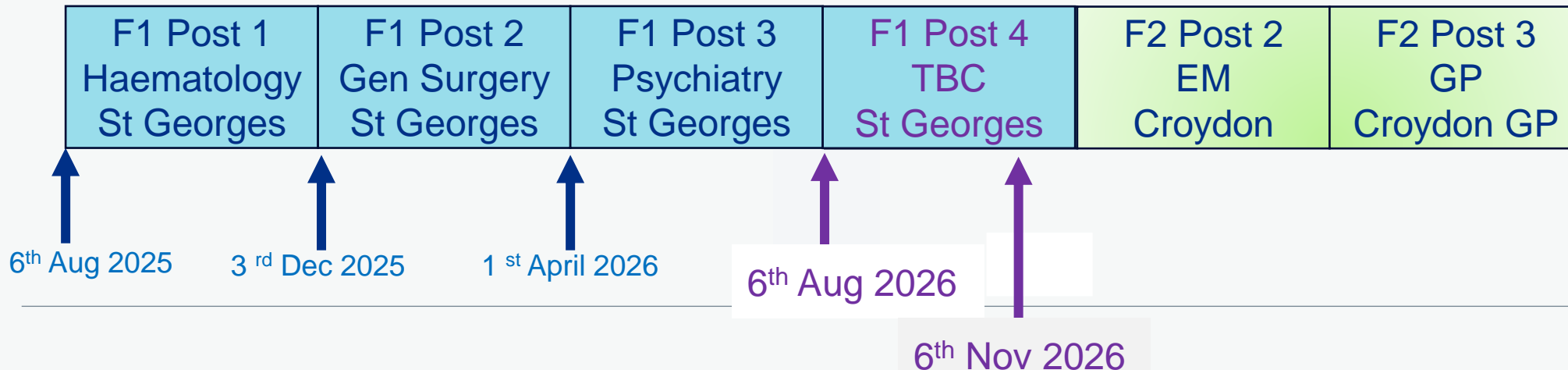
F1: 12 months  
LTFT: 0.8  
Calendar months:  $12 / 0.8 = 15$  months  
Number posts: 3.75 posts

F2 Post 1  
Paediatrics  
Croydon

→ Re-allocation

June: ARCP

Final ARCP



# Example LTFT 0.6 Programme Timeline

**F1: 12 months**

**LTFT: 0.6**

**Calendar months:**  $12 / 0.6 = 20$  months

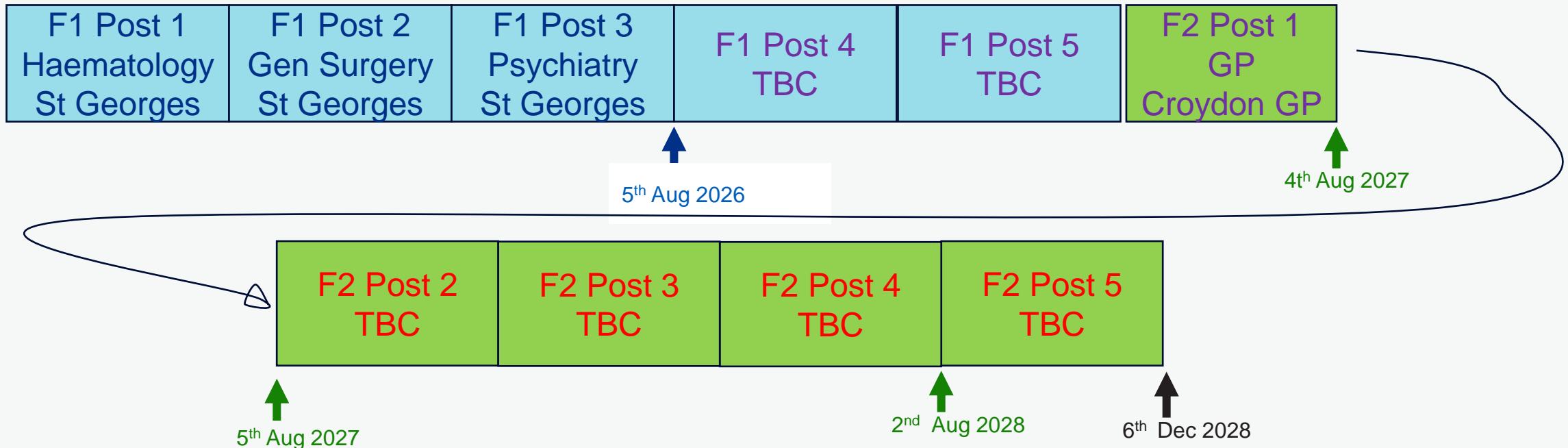
**Number posts:** 5 posts

**F2: 12 months**

**LTFT: 0.6**

**Calendar months:**  $12 / 0.6 = 20$  months

**Number posts:** 5 posts





# LTFT programmes

Will be reviewed by the School to ensure educational balance

Rotas are an employer responsibility

ARCP at least every 15 months (Gold guide requirement)



# LTFT application process

Application via the portal

Notice period of 16 weeks (unless exceptional circumstances)

Process for changing LTFT fraction is the same

# Further information ?

The screenshot shows the London Foundation School website. The browser address bar displays 'london.hee.nhs.uk'. The page features a blue header with the 'London' logo, a 'Login' button, and a search bar. Below the header is a navigation menu with categories: Home, Recruitment, Medical Training (highlighted), GP, Professional Support Unit, PSU Wellbeing Hub, Faculty Development, and Quality. A secondary menu lists 'Coaching Application 2024', 'Dental', 'Developing your English for Clinical Practice - Virtual Course', and 'Distribution of Medical Specialty Training Programme'. The main content area begins with a welcome message: 'Welcome to the London Foundation School web pages. The London Foundation School was formed in 2023 following the merge of the North London Foundation School and south London trusts who were formerly part of the South Thames Foundation School (STFS)'. Below this is a vertical list of blue buttons with white text, providing links to various sections of the website.

London Login Search

Home Recruitment Medical Training GP Professional Support Unit PSU Wellbeing Hub Faculty Development Quality

Coaching Application 2024 Dental Developing your English for Clinical Practice - Virtual Course Distribution of Medical Specialty Training Programme

Welcome to the London Foundation School web pages.

The London Foundation School was formed in 2023 following the merge of the North London Foundation School and south London trusts who were formerly part of the South Thames Foundation School (STFS).

- What is a Foundation School?
- The London Foundation School team
- Contact us
- FAQ's
- Resources, Information & Useful links
- Arrangements for managing doctors with special circumstances (including pre-allocation)
- London Foundation School Recruitment
- Group & Programme Preferencing
- London Foundation School Annual Programme Fair
- London Foundation School - Prospectus
- London Trusts