

# London Boroughs of Richmond and Wandsworth

## Public Health Registrar Placement and Opportunities

### 2021-22

Public Health

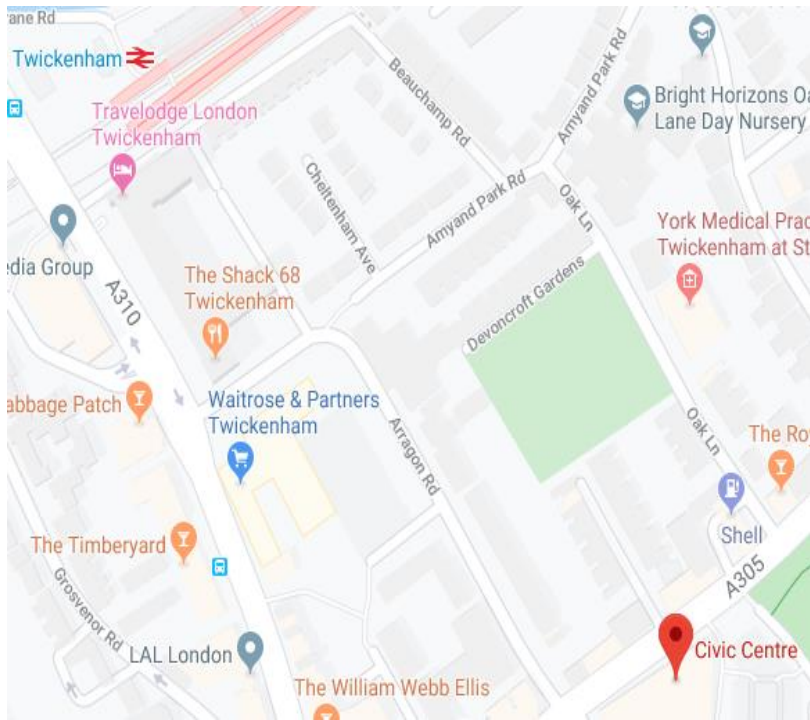


# Our locations

We work flexibly across two main locations in Twickenham (Richmond), and Wandsworth Town. Both are centrally located in the Town Centre with good access to national rail and TfL buses. We are currently working from home.



Civic Centre, 44 York Street  
Twickenham, TW1 3BZ



The Town Hall, Wandsworth High St  
London SW18 2PU

# Description

Richmond and Wandsworth Councils is a Shared Staffing arrangement that provides services to over half a million residents across South West London.

Although the demographics and challenges facing the two boroughs are different, there are many synergies and opportunities afforded by working across both, as well as increasingly, at South West London level. There is a strong emphasis on prevention across the life-course and on developing health-promoting environments and communities to help stem the tide of long-term conditions and increasing costs.

The COVID pandemic has presented new opportunities and challenges including expansion of the health protection team and capacity of Public Health, and renewed focus on working across the councils and with local communities to address health inequalities

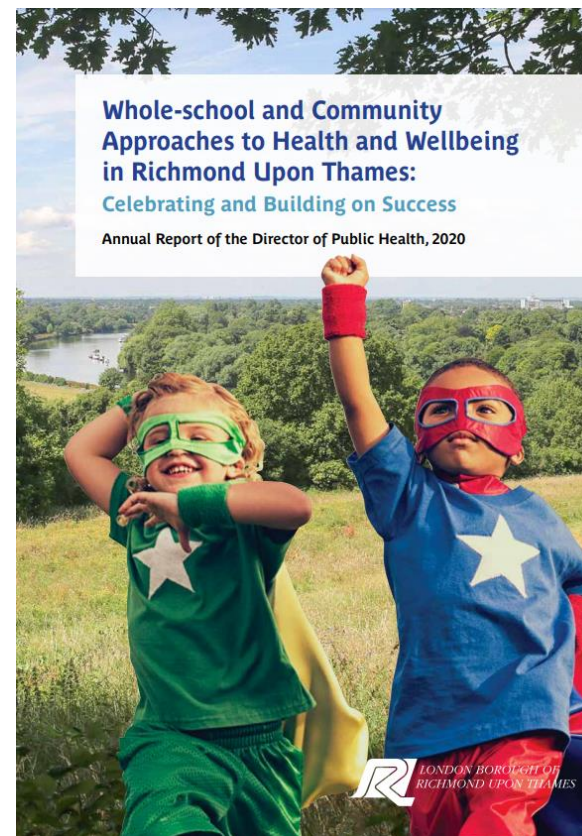
Public Health



# Recent Annual Director of Public Health Reports

## **Whole-school and Community Approaches to Health and Wellbeing in Richmond Upon Thames: Celebrating and Building on Success**

<https://www.datarich.info/annual-report-of-the-director-of-public-health/>



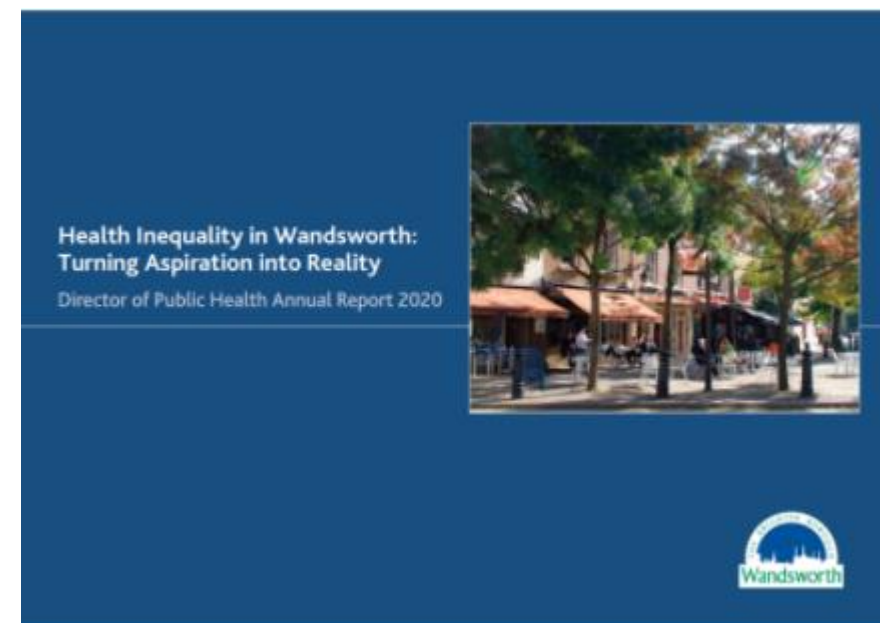
Public Health



# Recent Annual Director of Public Health Reports

## Health Inequality in Wandsworth: Turning Aspiration into Reality

<https://www.datawand.info/director-of-public-health-annual-report/>



Public Health



# Wandsworth

- Largest inner London borough with a population of approximately 320,000.
- One of highest proportions of people aged 25-44 of any council in the country (46%), but still has high number of older people
- A borough of contrasts - for the most part, people are affluent, well educated, healthy and in work. However, a minority are not so fortunate and nearly 30% of children come from income deprived households.
- Large regeneration projects being undertaken in Wandsworth, including the Nine Elms development on the South Bank and major investment in regenerating other areas of the Borough. These provide exciting opportunities for public health input and involvement in creating healthy communities.

**314,544** residents



**Regeneration** **20,000**  
new homes to come in Nine Elms alone

**Over 30 parks**  
and open spaces,  
making up over **over a fifth** of the borough



**Good transport links** **45%** of Wandsworth residents of working age travel to work by public transport.  
**The second highest in country**



**Five miles of Thames river-frontage**  
with five bridges allowing easy access to North London

Wandsworth is **the most popular borough** for people moving to London from elsewhere in the UK



**Vibrant town centres:**

Balham,  
Clapham Junction,  
Putney,  
Tooting,  
Wandsworth



**Safest**  
Inner London borough

**Higher levels of education**  
Examination **results exceed** local and regional averages



Two universities within the Borough

**47 %** of adults educated to degree level or above  
**2nd highest in the country**

A variety of **Healthcare Assets**  
including St George's Hospital,  
42 GP surgeries, 60 community  
pharmacies and 33 care homes



**Second highest**  
employment rate  
in London **79%**

Committed voluntary sector

**35% adults**  
**volunteer**



**Culture and Leisure**

Landmarks such as Young's Brewery,  
Peace Pagoda and Battersea Power Station  
Theatres including Battersea Arts  
Centre, Theatre 503, Putney Arts  
Theatre and Tara Arts Theatre  
Range of events including  
**Get Active Wandsworth Festival,**  
**Wandsworth Arts Fringe,**  
**Feel Good Festival**



**Public Health**





# Richmond

- Overall is a healthy and safe place to live with low premature mortality and low levels of crime and accidents.
- Rich in assets – green spaces, good schools and high levels of volunteering.
- However, there is still a 5 year difference in life expectancy between men living in the most affluent and most deprived areas
- Absolute numbers of people who adopt unhealthy behaviours and lack emotional and mental wellbeing are significant
- Highest percentage in London of children aged 15 engaged in risky behaviours
- Potential unmet needs, amongst the most vulnerable members of our population such as older people living alone



# Opportunities

The public health team works closely with partners across the wider councils, including Environment, Transport, Planning and Housing, as well as in tandem with both CCGs. There are many opportunities for Registrars to gain experience in public health projects linked to the wider determinants of health and healthcare public health, as well as health improvement and aspects of health protection.

Previous Public Health Registrars have led significant projects and presented at Management Team meetings, Cabinet Member Briefings, and Health and Wellbeing Board.

Examples of projects registrars completed include:

- A wide range of COVID-19 work
- Pharmaceutical Needs Assessment
- Joint Strategic Needs Assessment Chapters
- Dementia Needs Assessment
- Sexual Health Needs Assessment
- Inequalities Profiles
- Falls and Bone Health Service evaluation
- Prevention Framework

We also host 4 GP registrars a year on a Public Health rotation

Public Health





# COVID-19 response

Since the beginning of March 2020, the public health team has led the response to COVID across the council and both boroughs including the establishment of:

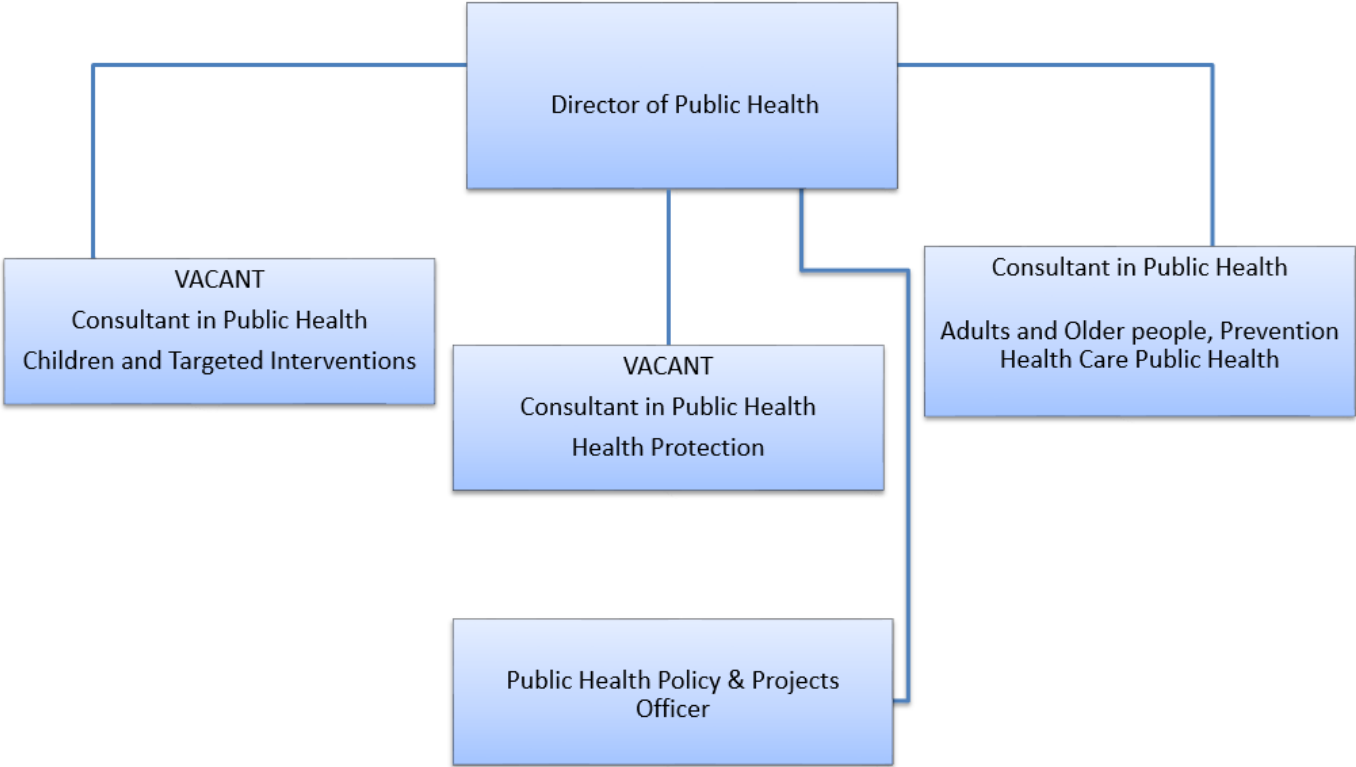
- Local outbreak control group
- Local engagement boards and a Covid Health Protection Board
- Covid Response Team and Helpdesk
- Surveillance and reporting systems
- Local case tracing service
- Local Test sites
- Community testing programme (asymptomatic)
- Communication and Community Engagement plan

Public Health

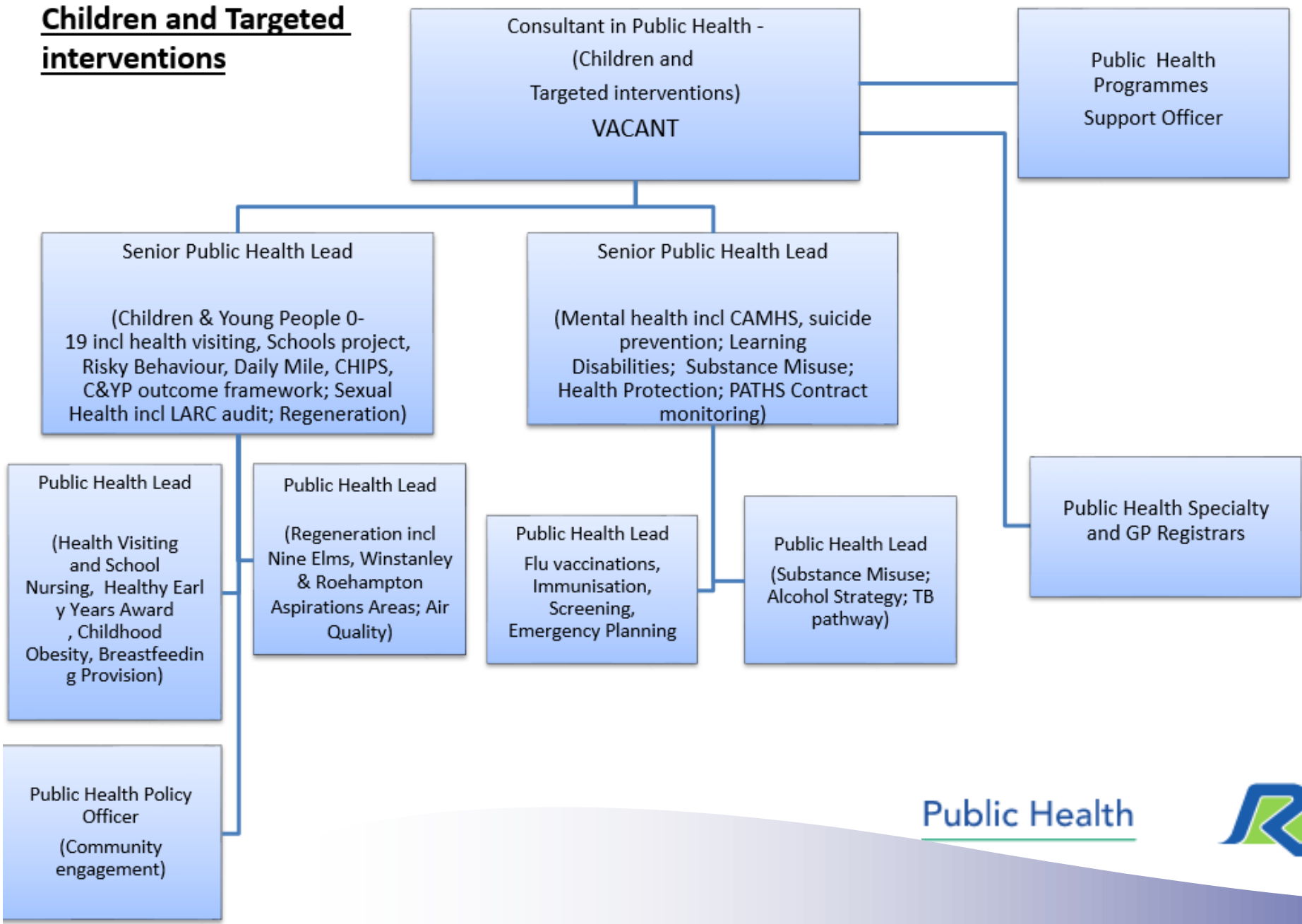


# Our public health team/structure

**Director & Heads of Service**



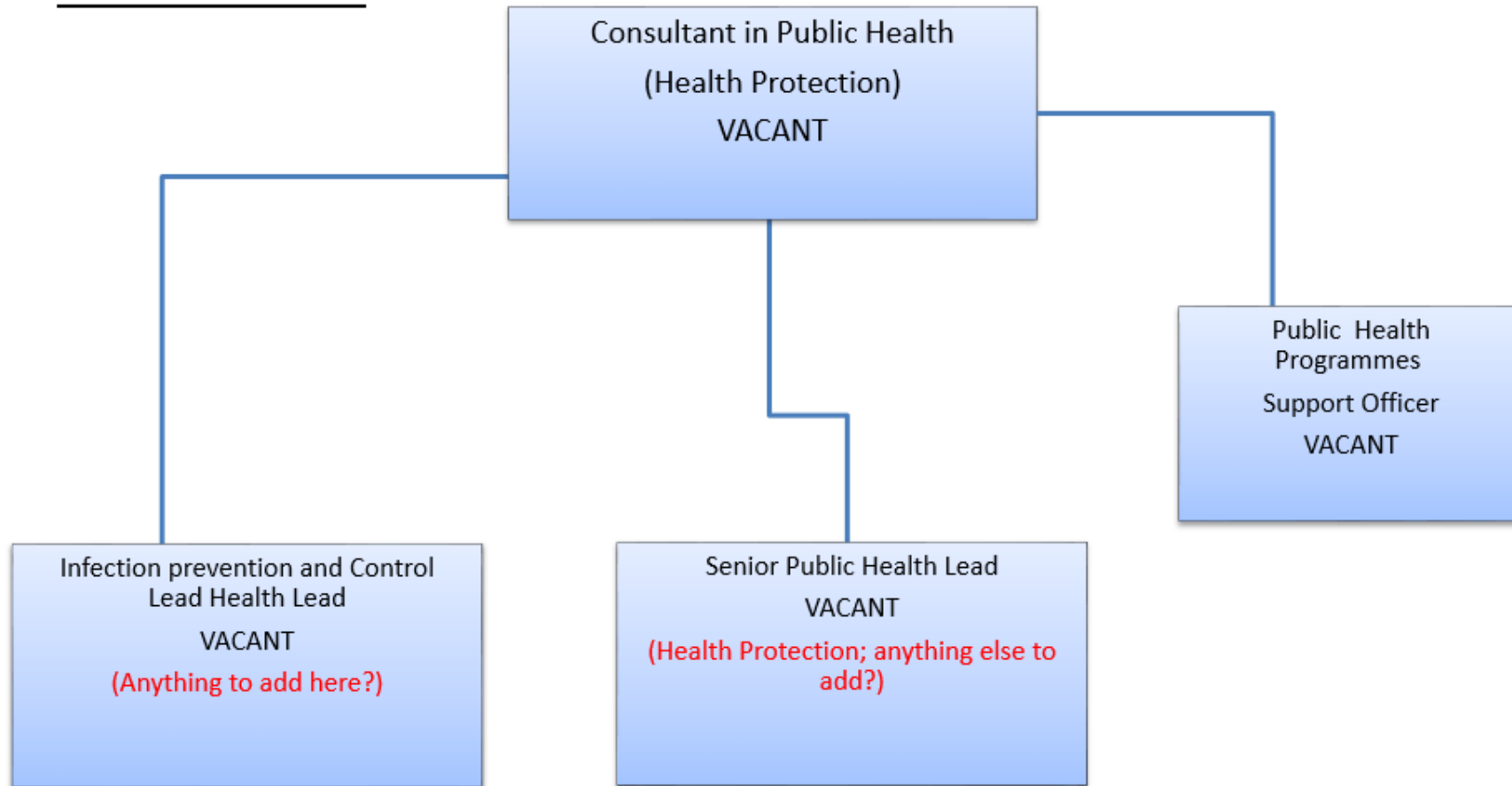
**Children and Targeted interventions**



**PH Team Portfolio includes:**

- **Start Well**
- **Health Visiting, School Nursing and Child Weight Management**
- **Breastfeeding**
- **Immunisations**
- **Mental Health Strategy**
- **Suicide Prevention**
- **Substance Misuse Prevention**

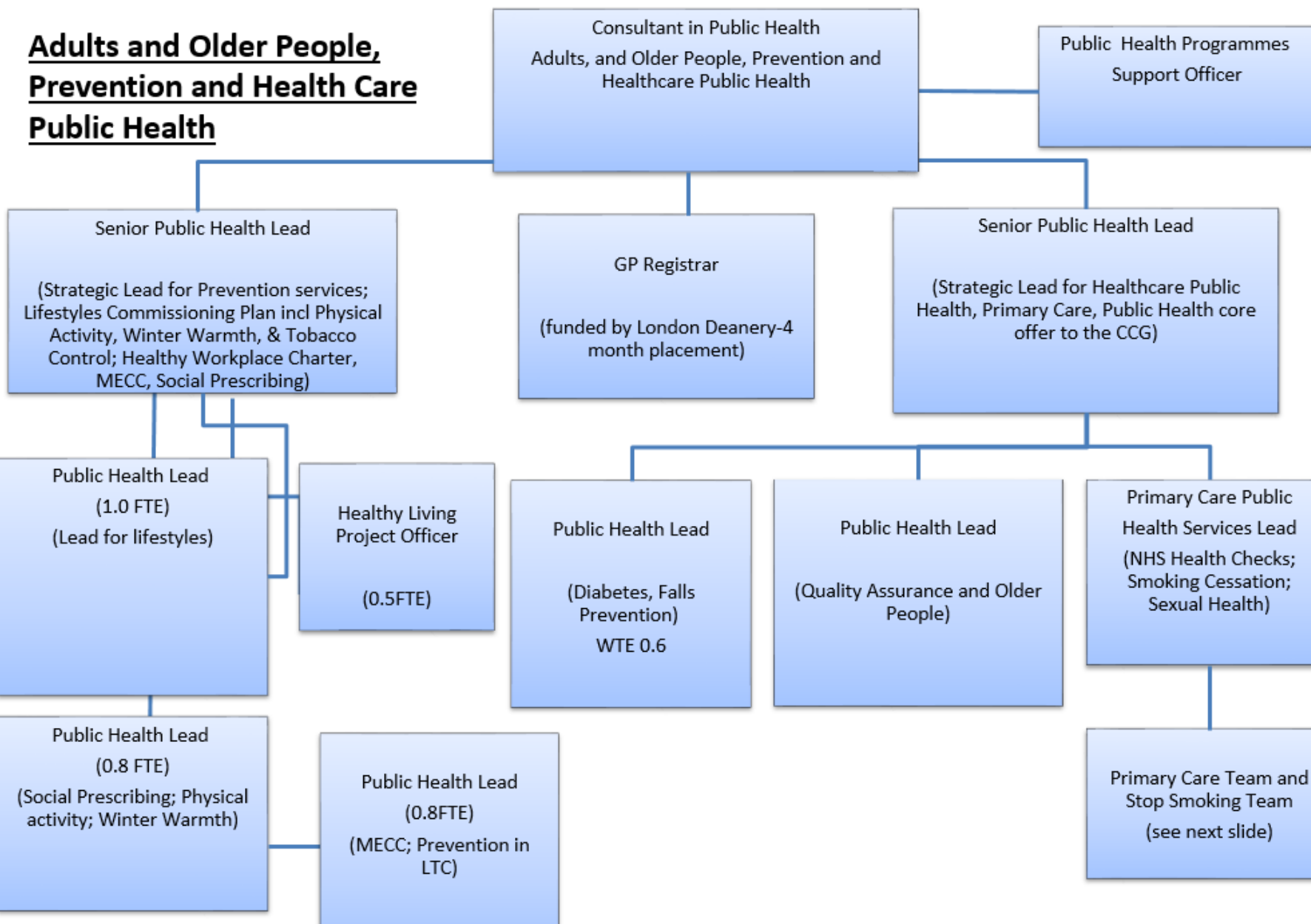
## Health Protection



## PH Team Portfolio includes:

- Health Protection and Wider Determinants
- Immunisations and Screening
- Regeneration
- Air Quality
- COVID-19
- Health Protection

# Adults and Older People, Prevention and Health Care Public Health



## PH Team Portfolio includes:

### Prevention at individual, place and community levels

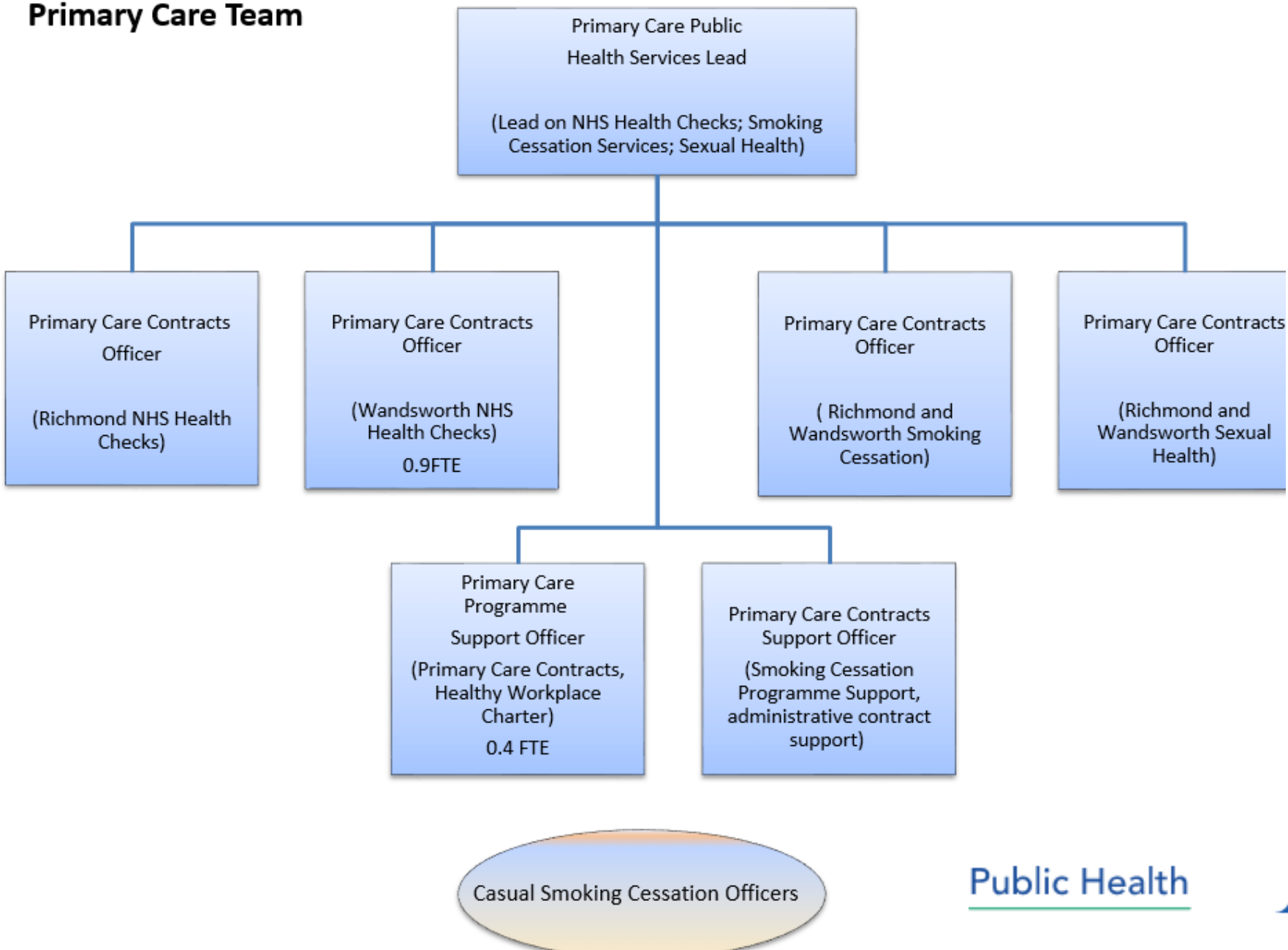
- Social Prescribing
- Making every contact counts (MECC)
- Prevention of LTC
- Healthy Work Place Charter

### Healthcare Pathways

- Diabetes prevention
- Falls Prevention
- Dementia
- End of Life Care



# Primary Care Team



## Primary care Services Portfolio includes:

- **NHS Health Checks**
- **Smoking Cessation**
- **Sexual Health**

Public Health



# Contact Details

If you require further information about Richmond and Wandsworth as a training location, please contact:

Shannon Katiyo (Director of Public Health and Educational Supervisor)

☎: 020 8734 3014 (Extension 23014) **Mob:** 078 2527 3875

Email: [DASSExecSupport@richmondandwandsworth.gov.uk](mailto:DASSExecSupport@richmondandwandsworth.gov.uk)

OR

Dr Nike Arowobusoye (Consultant in Public Health, Project Supervisor and UKPHR Portfolio Assessor)

☎: 07989223090

Email: [nike.arowobusoye@richmondandwandsworth.gov.uk](mailto:nike.arowobusoye@richmondandwandsworth.gov.uk)

Public Health

